

WEEKLY SNAPSHOT



Administration building façade taking shape



Administration building structural steel on roof

ADMINISTRATION BUILDING

- Structural steel on roof is complete
- Tiling to amenities and installation of curtain wall on Level 6
- Amenities fit out started on Level 4
- Wall framing and gyprock sheeting on Level 3
- Curtain wall sills and pelmets complete on Level 2
- Ceiling sheeting, setting and painting, as well as installation of internal glass doors and windows to meeting rooms on Ground Level and Level 1
- Installation of façade stone to Northern elevation Level 1 continues

CIVIC PLAZA AND CAR PARK

- Demolition of awning commenced
- Water feature fully commissioned
- Testing and commissioning of stage lights and speakers
- Demolition of Lift 1 commences
- Demobilisation from site continues

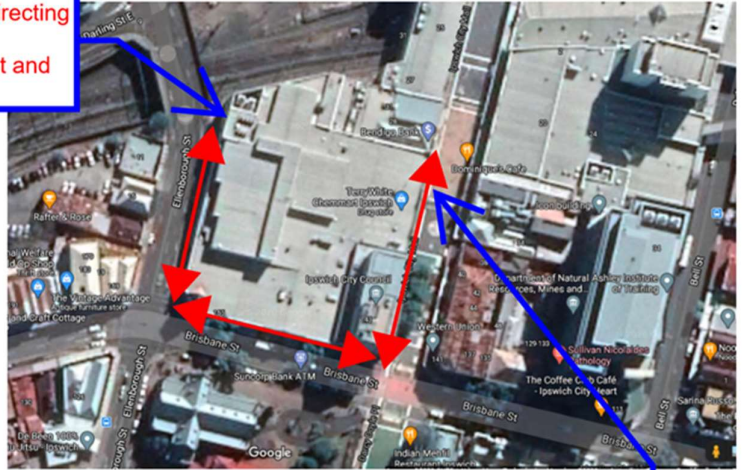
FAST FACT

- 160 workers across the Library, Civic Plaza and Administration Building this week.

Stay up to date

Visit Shapeyouripswich.com.au

Closed off with detour map in place directing people up Ellenborough st and around



Closed off with detour map in place directing people up Nicholas st and around

TEMPORARY CLOSURE TO BOTTLE ALLEY

- Bottle Alley will be closed from:
Wednesday 2 September until Friday 4 September
- This is to allow for demolition works to the southern side of the building
- Construction fencing will be put up during this time, with signage to direct pedestrians to take alternate routes between Nicholas and Ellenborough Streets.

Stay up to date

Visit Shapeyouripswich.com.au