

# BELL STREET OVERPASS REMOVAL PROJECT

As part of the Ipswich city landscape for over 30 years, the Bell Street overpass once connected pedestrians to the Ipswich City Square retail precincts. Now a bustling health, transport and business hub, Bell Street's renewal continues to transform with the removal of the pedestrian overpass.

Unused for some time and showing the signs of ageing, the Queensland State Government has engaged Ipswich City Council to remove the overpass. It is anticipated to take five months to complete the removal and upgrade the connecting building facades.

As a locally significant project, the revitalisation of Bell Street will continue to transform Ipswich Central into a modern, economic and cultural powerhouse for all residents and visitors. Council will continue to collaborate with the state government to upgrade the landscape of the Bell Street precinct.

## Frequently asked questions

### *What is the project work scope?*

- Removal of pedestrian overpass structure
- Upgrade of building facades where the overpass was connected
- Asbestos removal by licensed contractors.

## Project timeline

<b>MID-MARCH</b>	<ul style="list-style-type: none"><li>▪ Service location confirmation: gas, water, sewer, telecommunications</li><li>▪ Set up of scaffolding and safety barrier fencing</li></ul>
<b>LATE-MARCH</b>	<ul style="list-style-type: none"><li>▪ Dismantlement of pedestrian overpass in preparation for removal</li></ul>
<b>EARLY-APRIL</b> Weekend Shutdown	<ul style="list-style-type: none"><li>▪ Separation of the pedestrian overpass where it interfaces with Bell Street buildings</li><li>▪ Roof bracing installation</li></ul>
<b>MID-APRIL</b> Weekend Shutdown	<ul style="list-style-type: none"><li>▪ Cut and remove beams</li><li>▪ Removal of pedestrian overpass</li><li>▪ Transportation of beams and overpass from Bell Street</li></ul>
<b>LATE-APRIL</b>	<ul style="list-style-type: none"><li>▪ West Moreton Health building rectification works</li></ul>
<b>EARLY TO MID-MAY</b>	<ul style="list-style-type: none"><li>▪ Ipswich City Square building rectification works</li></ul>
<b>EARLY-JUNE</b>	<ul style="list-style-type: none"><li>▪ Removal of scaffolding and safety barrier fencing and demobilisation of site</li></ul>

*Work scope is subject to weather and construction constraints.*

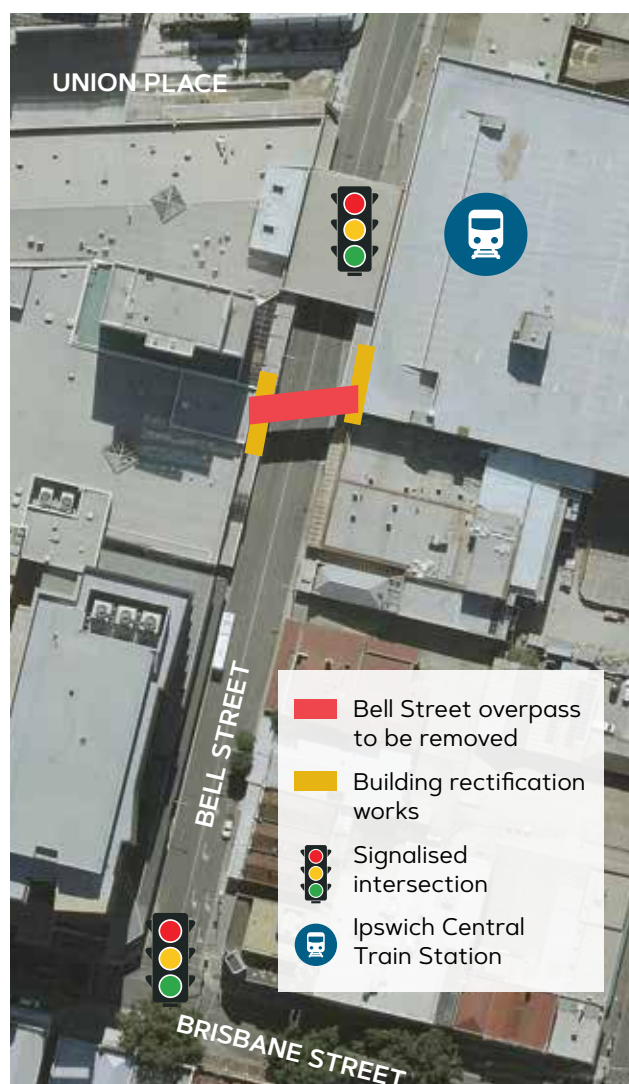
### Why is it being removed?

It is being removed as it is no longer fit for purpose and being used by pedestrians to connect to Ipswich Central precincts. Now over 30 years old the overpass is showing signs of ageing and in need of some repair and maintenance if it was to remain. There is a safe signalised pedestrian crossing below, shaded under an awning connecting health, transport and businesses for pedestrians in Bell Street.

### What is the project timing and hours of operation?

- The project is scheduled to commence in mid-March and be completed by mid-June 2024
- The majority of works will be completed Monday to Friday from 7.00 am to 5.00 pm
- Where partial or full road closures are required, night works will occur to limit impacts to commuters and customers. Nightworks will occur from Sunday to Thursday from 7.00 pm to 5.00 am
- When the team is ready for the removal some weekend shutdowns will be required from 8.00 pm Friday until 5.00 am Monday
- All hours of operation will be promoted and key stakeholders notified.

### Where is the work zone location?



### Will there be any road closures or traffic impacts?

Periodically, Bell Street will be either partially or fully closed to live traffic. Traffic management measures including signage, vehicles and controllers will be in place to direct traffic for the duration of works.

Variable message signs will advise of recommended detours where required. Motorists, cyclists and pedestrians are advised to be alert and aware of the changed traffic conditions.

There will be limited pedestrian access around the construction area. Temporary footpath closures near the work area will occur and alternative routes will be signed.

### Will I still have access to Ipswich Train Station and the Bell Street Translink bus stop?

Yes, you will still have access to Ipswich Train Station for the duration.

There will be a temporary bus stop provided during the weekend shutdown works and commuters will be directed with traffic control and signage.

### What is Ipswich Central Revitalisation?

The Ipswich Central Revitalisation builds on and advances established work, ideas and initiatives already underway in council, and harnesses the power and passion of the local community through opportunities for community members and traders to actively contribute to the city's revitalisation.

This placemaking approach recognises that everyone has a role to play in the transformation of great places. There are numerous projects underway all which contribute to revitalising the face of Ipswich Central and the Bell Street transformation is a part of this.

For more information on Ipswich Central Revitalisation visit [ipswichcentral.com.au](https://ipswichcentral.com.au)

### Will events still go ahead during this project?

Yes, all scheduled events and activities between February and June will still go ahead as planned within Ipswich Central. Our Ipswich City Council teams are collaborating to ensure our works will not have any adverse effects on any small and large scale events and activities planned for our Ipswich community.

### How can I get more information?

For more information about the works, please contact the Bell Street Pedestrian Removal Project Team by emailing [capitalprojects@ipswich.qld.gov.au](mailto:capitalprojects@ipswich.qld.gov.au) or call (07) 3810 6666 (8.00 am - 4.30 pm).